



RUBY GARDENS

FACTORY ROAD - PIARCO

MIDDLE
UNITS

\$1,600,000

END UNITS
DUPLEXES

\$1,675,000.00
\$1,750,000.00

TYPE

TOWNHOUSES & DUPLEXES

SIZE

1490 SQ FT



LIVING SPACE



TOWNHOUSE UNITS



KITCHEN



DUPLEX UNITS

UNIT OVERVIEW

Luxury living at its best, with spacious rooms, top-of-the-line amenities, and modern finishes. Ruby Gardens is a fully gated community with remote access entry and all underground electrical and plumbing.

The Development consists of:
6 Duplexes
8 Townhouse Units

 3
Bedrooms

 2 1/2
Bathrooms

Factory Road, Piarco

[CONTACT US](#)



-



WWW.DAVPROPERTIESTT.COM



UNIT OVERVIEW

EXTERIOR & STRUCTURE

- Aluminum windows with tempered laminate glass
- Termite-treated foundations
- Modern gypsum ceilings

FLOORING & FINISHES

- Porcelain tiles on the ground floor
- SPC flooring on upper floors

LIVING SPACE & AMENITIES

- Open concept living, dining & kitchen area
- Ground floor fully air conditioned
- Laundry area on the ground floor
- Water heater included

BEDROOMS

- 3 spacious bedrooms
- Air conditioning in all bedrooms
- Closets included in 2 bedrooms

BATHROOMS

- 2 ½ bathrooms, all with vanities and quartz countertops
- Frameless glass shower enclosures

KITCHEN

- Modern kitchen design
- Quartz countertops
- Soft-close doors and drawers
- Glass tile backsplash

[CONTACT US](#)



-



WWW.DAVPROPERTIESTT.COM

UNIT IMAGES

DUPLEX - FRONT



DUPLEX - BACK



[CONTACT US](#)



-



WWW.DAVPROPERTIESTT.COM

UNIT IMAGES

TOWNHOUSES - FRONT



TOWNHOUSES - BACK



[CONTACT US](#)



-



WWW.DAVPROPERTIESTT.COM

UNIT IMAGES

INTERIOR



CONTACT US



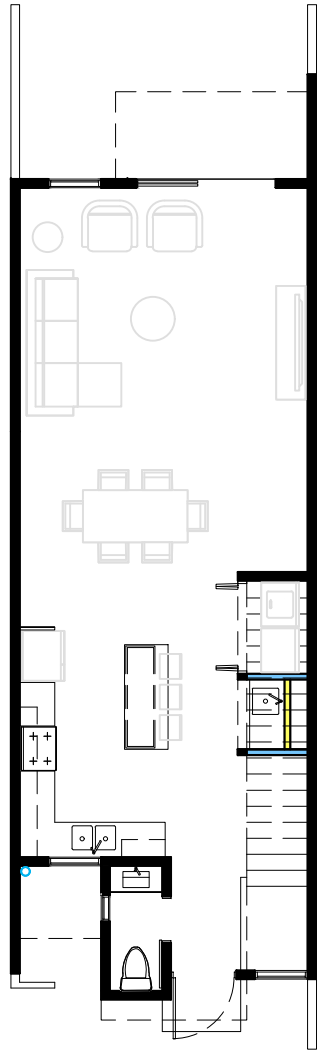
-



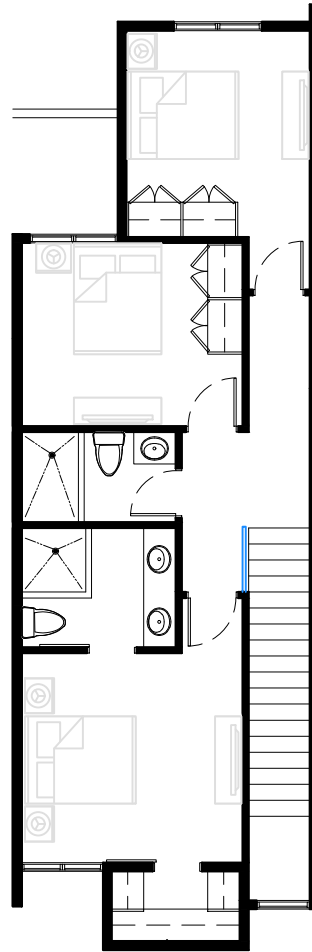
WWW.DAVPROPERTIESTT.COM



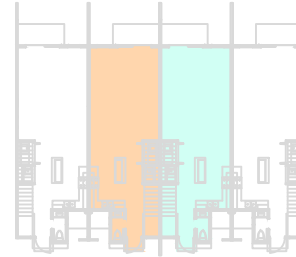
SITE LAYOUT



GROUND FLOOR PLAN

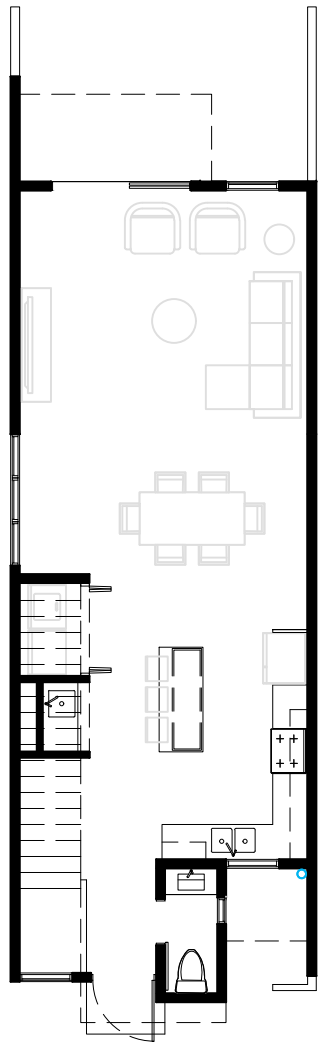


FIRST FLOOR PLAN

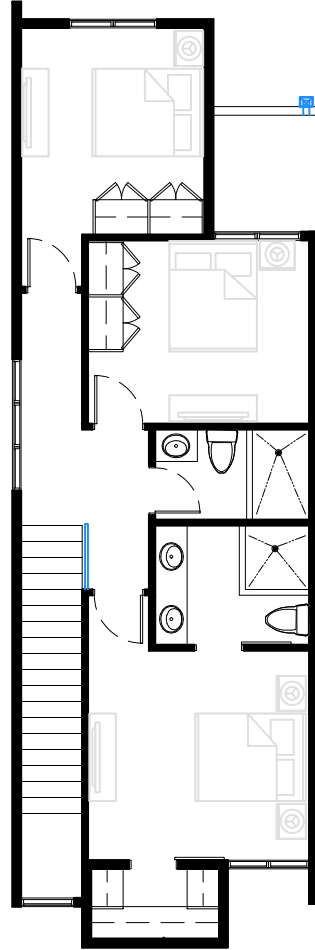


TOWNHOUSE TYPICAL MIDDLE UNIT - 1490 Sq. ft.

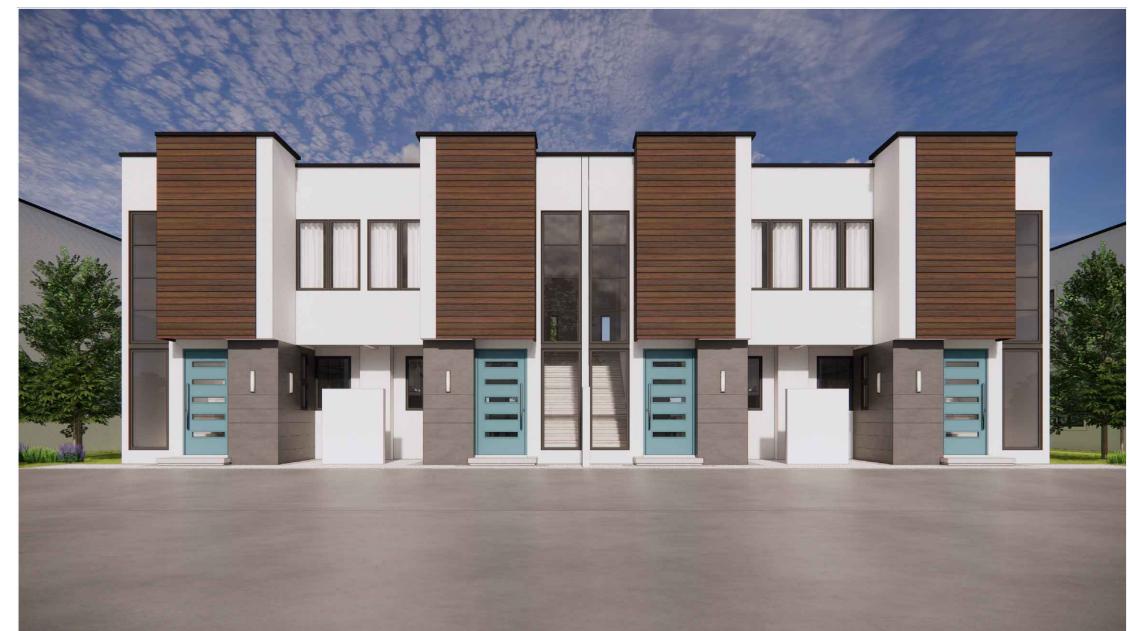
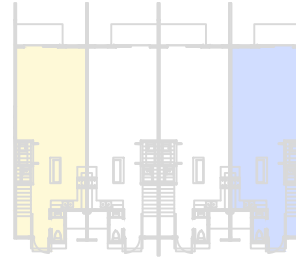




GROUND FLOOR PLAN

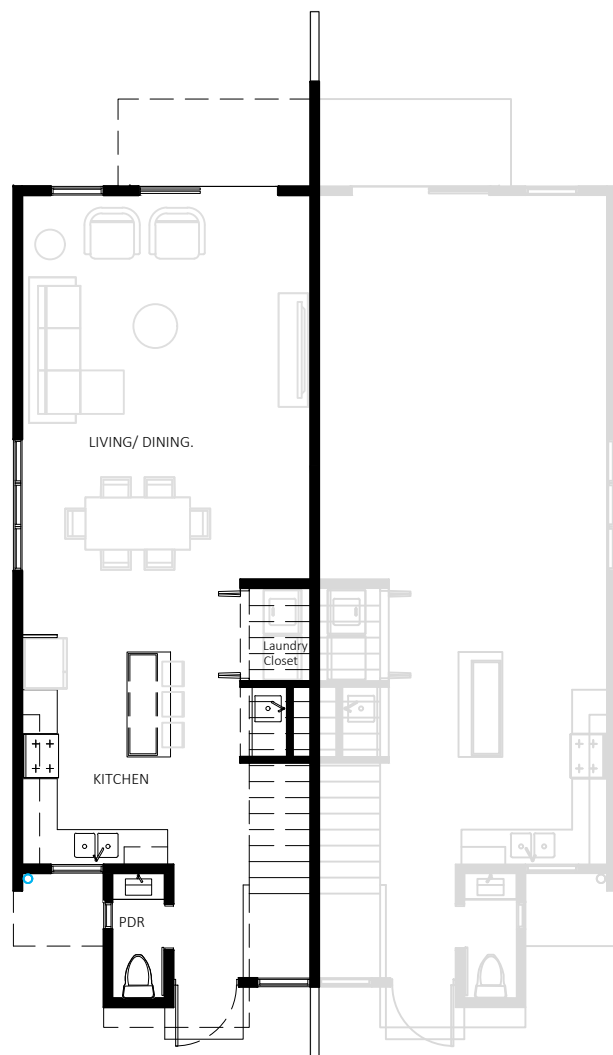


FIRST FLOOR PLAN

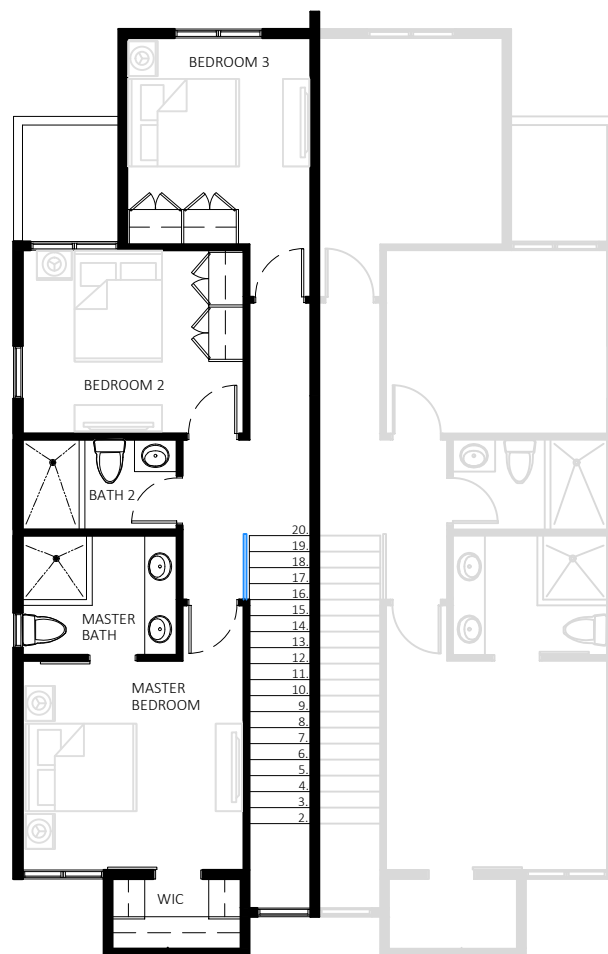


**TOWNHOUSE TYPICAL
END UNIT - 1490 Sq. ft.**





GROUND FLOOR PLAN



FIRST FLOOR PLAN



DUPLEX UNIT - 1490 Sq. ft.